

Lira Wanderstern

Height 170cm Bust 82cm Waist 60cm Hips 90cm Shoe 245mm
Hair Blonde Eyes Hazel



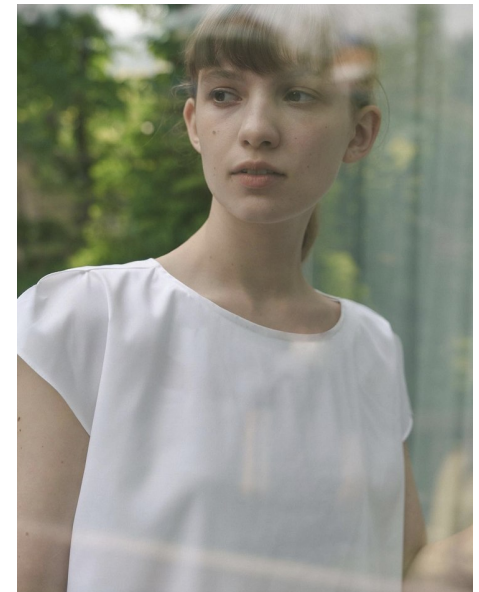
BLOOMING CHEEKS
FOR THE BLOOMING CHEEKS, WE USED A LIGHT
ORANGE TINTED BLUSH. IT'S A PERFECT
MATCH FOR HER HAIR AND SKIN TONE.
WE USED A LIGHT ORANGE TINTED BLUSH
TO GIVE HER CHEEKS A NATURAL, BLOOMING
LOOK. IT'S A PERFECT MATCH FOR HER
HAIR AND SKIN TONE.
WWW.A.SSET.COM



GREEN LINE
FOR THE GREEN LINE, WE USED A LIGHT
GREEN TINTED BLUSH. IT'S A PERFECT
MATCH FOR HER HAIR AND SKIN TONE.
WE USED A LIGHT GREEN TINTED BLUSH
TO GIVE HER CHEEKS A NATURAL, BLOOMING
LOOK. IT'S A PERFECT MATCH FOR HER
HAIR AND SKIN TONE.
WWW.A.SSET.COM



RASIVUS



a.sset